

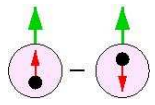
# Lumi Preparations and Beam Commissioning

Dustin E. McNulty

UMass

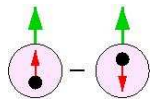
*[mcnulty@jlab.org](mailto:mcnulty@jlab.org)*

July 21, 2008



## Lumi pre-beam preparations

- Remove all ND filters from lumi
- Repair 2 broken spare signal cables
- Make sure have working and characterized PMTs in all 8 positions
- Minimize electronics noise in the hall (ground loops, etc.)
- Close assistance with Radcon group is necessary for these tasks



## Lumi Beam Commissioning

- Take data under the various run conditions/luminosities proposed for the experiment (few hours)
- Analyze the data (online and offline)—determine and catalog optimal HV and ADC gain settings for each target/beam current combination
- Repeat measurements to verify proper settings
- Iterate above two steps if necessary until settings are proper
- Could also coordinate lumi commissioning tests with target spin-flip tests